

## GPT203

### DESCRIPTION

GPT203 IP68 waterproof pressure transmitter is specially designed for measuring pressure of outdoor or underwater pipeline. Its waterproof grade is IP68, suits for various harsh environment like long-term flooding, immersion, high humidity, and temperature, alternating code and heat, sewage corrosion and others. GPT203 pressure sensor adopts diffused silicon core as the sensitive components, and built-in processing circuit can change the millivolt signal of sensors to standard current and voltage output. It can be directly connected with the computer, control instrument and display instrument, etc. GPT203 pressure sensor, selects high stability and reliability piezoresistive pressure sensor and high-performance dedicated circuit, make it an overall reliable and stable product, and allows long distance signal transmission. The product adopts the design of the input-type outlet method, careful component selection, process verification and curing, cyclic loading stress relief, aging, environmental simulation testing and other processes to ensure the stability and reliability of each product.

### FEATURES

- 316L stainless steel isolated diaphragm structure
- Micro amplifier voltage and current output
- Anti-interference, high stability and low drift
- Waterproof liquid level outlet protection grade IP68
- Small size and easy to install OEM is provided
- Full range coverage absolute pressure, gauge and sealed gauge pressure can be measured

### APPLICATION

- Outdoor pipeline pressure monitoring
- Water tank pipeline pressure monitoring
- Pressure detection under damp heat conditions
- Industrial Process Control



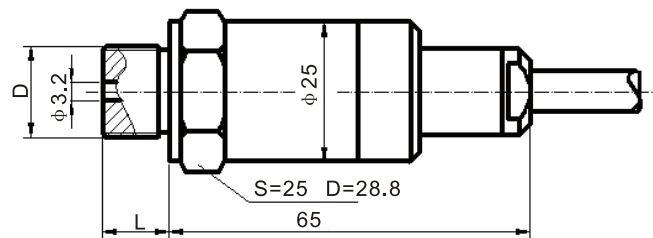
## SPECIFICATION

Pressure range	-0.1MPa...0kPa~10kPa...100MPa		
Pressure type	G、A、S		
Output signal ( mA )	4~20		
	0~5V(0~10) 3-wire		
Accuracy	0.1(customized)	0.25 (customized)	0.5
Nonlinearity ( FS% )	≤0.1	≤0.2	≤0.4
Hysteresis, repeatability(FS% )	≤0.05	≤0.05	≤0.1
Zero and sensitivity temperature Drift ( %FS/°C )	≤0.015	≤0.03	≤0.05
Long-term stability(%FS/Year)	≤0.1	≤0.2	≤0.5
Working voltage(VDC)	+15~+30 (Calibration value+24)		
Compensated temperature(°C)	0~+50 (≤200kPa) , -10°C~70°C (>200kPa)		
Operating temperature(°C)	-40~+85		
Overload capacity(%)	≤200 (<10MPa) ; ≤150 (≥10MPa)		
Load resistance(Ω)	R= (U-12.5) /0.02-RD Note: U is voltage , RD is cable internal resistance		
Response time(10%~90%)ms	≤1		
Medium	Fluids compatible with 304, 316L or ceramic		
Diaphragm material	316L or Titanium alloy optional		
Housing shell	304、316L		
Pressure interface material	304、316L optional		
Protection	IP68		

## DIMENSION

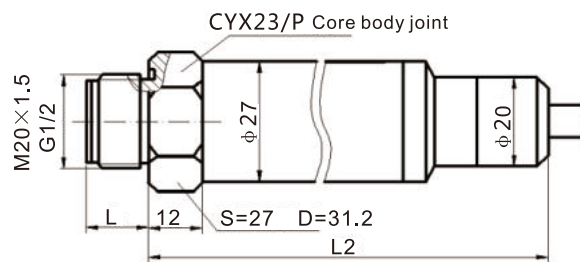
### Standard Product :

Pressure interface is optional according to recommended table



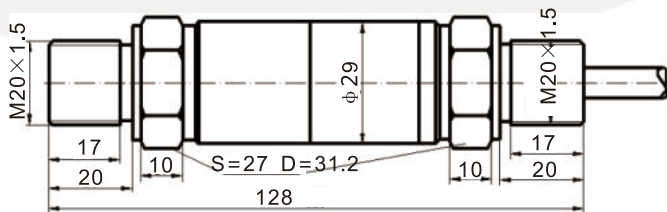
### Customized product :

1、 Flat membrane structure , easy to clean ; 2、 Pressure interface M20×1.5, G1/2 optional



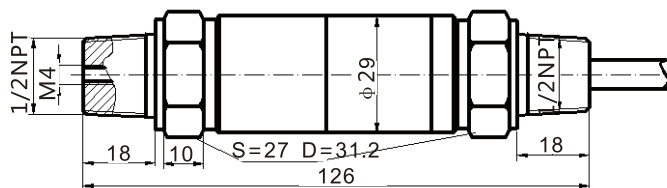
Customized product :

- 1、 Double flat thread , available to install cable protection tube ; 2、 Pressure interface is optional according to recommended table



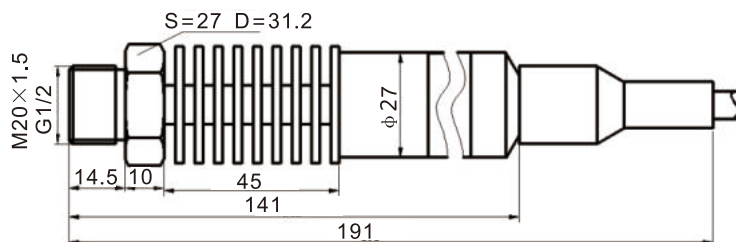
Customized product :

- 1、 Double tapered thread , available to install cable protection tube ; 2、 Pressure interface is optional according to recommended table



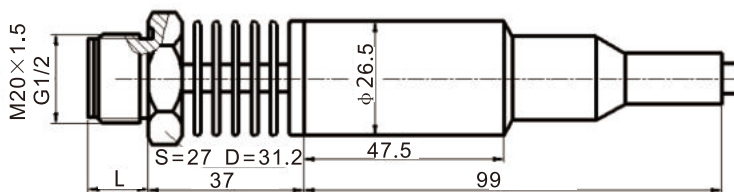
Customized product :

- 1、 High temperature flat membrane ; probe temperature resistance 200°C ; 2、 Pressure interface M20x1.5 or G1/2



Customized product :

- 1、 High temperature flat membrane ; probe temperature resistance 150°C ; 2、 Pressure interface M20x1.5 or G1/2



### Pressure interface

Dimension	Length	Dimension	Length	Dimension	Length	Dimension	Length
M22*1.5	15	M16*1.5	15	M8*1	12	3/8PT	15
G1/2	15	M14*1.5	15	G1/8	12	1/4NPY	15
M20*1.5	15	G1/4	15	1/2NPT	18	1/4PT	15
M18*1.5	15	M12*1	15	1/2PT	18	1/8NPT	12
G3/8	15	M10*1	12	3/8NPT	15	1/8PT	12

GPT203	Pressure transmitter						
	Code	<b>Pressure range</b>					
	0/X	-0.1...0~0.01...100MPa					
	Code	<b>Pressure type</b>					
	G	Gauge					
	S	Sealed gauge pressure					
	A	Absolute pressure					
	Code	<b>Output</b>					
	T1	4-20mA					
	T2	0-5VDC					
	T3	1-5VDC					
	T4	0-10VDC					
	T5	0.5-4.5VDC					
	Code	<b>Power supply</b>					
	V1	12VDC					
	V2	24VDC					
	V3	12-30VDC					
	V4	5V (limits to T5 0.5-4.5VDC)					
	Code	<b>Accuracy</b>					
	A1	0.1%F.S. (customized)					
	A2	0.25%F.S. (customized)					
	A3	0.5%F.S.					
	Code	<b>Electrical interface</b>					
	B1	Liquid level outlet					
	B4	Can be customized (Directly Note)					
	Code	<b>Pressure interface</b>					
	C1	M20*1.5					
	C2	G1/4					
	C3	G1/2					
	C4	1/4NPT					
	CX	Others					
GPT2000/1MPa	A	T2	V3	A2	B4	C4	Complete specifications

**Notes:**

- 1、When the pressure range is -5~5kPa , the pressure sensor chooses non-isolated silicon piezoresistive pressure chip, and the product can only measure non-corrosive gases.
- 2、Avoid being blocked if the pressure range of your gauge pressure product is below 3Mpa, because they are usually equipped with vent hole or vent cable.
- 3、GPT203 has mutple customizable choices, customers can choose according to their actual applications.