

# Universal Pressure Transmitter GPT200

GaMicos

## DESCRIPTION

GPT200 universal pressure transmitter, adopts diffused silicon core as the sensitive component, and built-in processing circuit can change the millivolt signal of sensors to standard current and voltage output. It can be directly connected with the computer, control instrument and display instrument, etc. GPT200 pressure sensor, selects high stability and reliability piezoresistive pressure sensor and high-performance dedicated circuit, make it an overall reliable and stable product, and allows long distance signal transmission. The product has undergone processes such as careful design, component selection, process verification and curing, cyclic loading and stress relief, aging, and environmental simulation testing to ensure that each product is stable and reliable.



## FEATURES

- 316L stainless steel diaphragm
- Micro amplifier · voltage and current signal output
- Strong anti-interference · long-term stability, low drift
- Multiple electrical interface to choose
- Small size · easy installation, and OEM is provided
- Wide range · available to measure Gauge, Absolute gauge and sealed gauge type

## APPLICATION

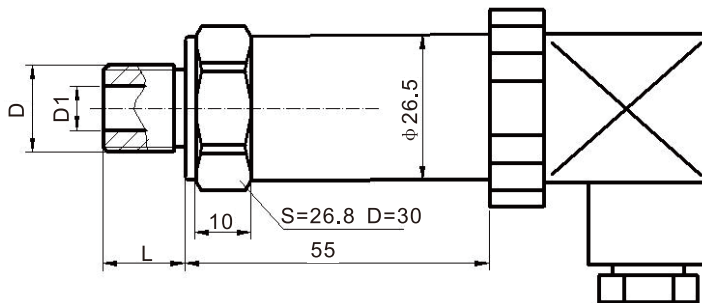
- Process control system
- Air compressor · Natural gas compressor
- HVAC, energy and water treatment
- Petrochemical and engineering machinery
- Coal mine, oil field, chemical industry, etc

## SPECIFICATION

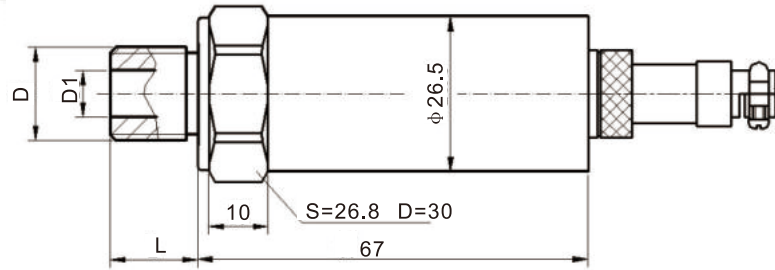
Pressure range	-0.1MPa...0kPa~10kPa...100MPa		
Pressure type	G、A、S		
Output signal ( mA )	4~20		
	0~5V(0~10) 3-wire		
Accuracy	0.1 (customized)	0.25(customized)	0.5
Nonlinearity ( FS% )	≤0.1	≤0.2	≤0.4
Hysteresis, repeatability(FS% )	≤0.05	≤0.05	≤0.1
Zero and sensitivity temperature Drift ( %FS/°C )	≤0.015	≤0.03	≤0.05
Long-term stability(%FS/Year)	≤0.1	≤0.2	≤0.5
Working voltage(VDC)	+15~+30 (Calibration value+24)		
Compensated temperature(°C)	0~+50 (≤200kPa) , -10°C~70°C (>200kPa)		
Operating temperature(°C)	-40~+85		
Overload capacity(%)	≤200 (<10MPa) ; ≤150 (≥10MPa)		
Load resistance(Ω)	R= (U-12.5) /0.02-RD Note : U is voltage , RD is cable internal resistance		
Response time(10%~90%)ms	≤1		
Medium	Fluids compatible with 304, 316L or ceramic		
Diaphragm material	316L or Titanium alloy optional		
Housing shell	304、316L		
Pressure interface material	304、316L		
Protection	IP65 (IP68 customizable)		

## DIMENSION

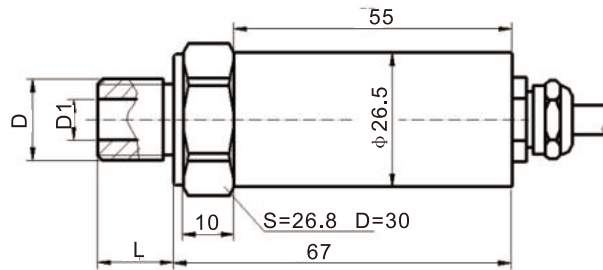
Hirschmann



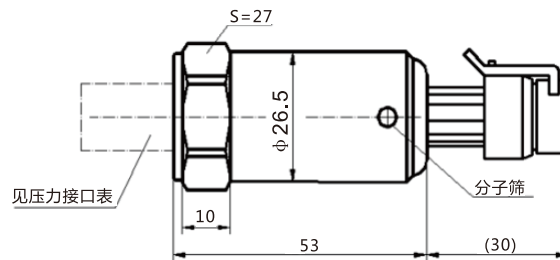
### M12X1 connector



### Cable connection



### Packard



### Pressure interface

Dimension	Length	Dimension	Length	Dimension	Length	Dimension	Length
M22*1.5	15	M16*1.5	15	M8*1	12	3/8PT	15
G1/2	15	M14*1.5	15	G1/8	12	1/4NPY	15
M20*1.5	15	G1/4	15	1/2NPT	18	1/4PT	15
M18*1.5	15	M12*1	15	1/2PT	18	1/8NPT	12
G3/8	15	M10*1	12	3/8NPT	15	1/8PT	12

GPT200 Pressure transmitter							
Code		<b>Pressure range</b>					
0/X		-0.1...0~0.01...100MPa					
Code		<b>Pressure type</b>					
G		Gauge					
S		Sealed gauge pressure					
A		Absolute pressure					
Code		<b>Output</b>					
T1		4-20mA					
T2		0-5VDC					
T3		1-5VDC					
T4		0-10VDC					
T5		0.5-4.5VDC					
Code		<b>Power supply</b>					
V1		12VDC					
V2		24VDC					
V3		12-30VDC					
V4		5V (only suitable for T5 0.5-4.5VDC output)					
Code		<b>Accuracy</b>					
A1		0.1%F.S. (can be customized)					
A2		0.25%F.S. (can be customized)					
A3		0.5%F.S.					
Code		<b>Electrical</b>					
B1		Hirsmann					
B2		Cable connection					
B3		M12X1 connector					
B4		Packard					
Code		<b>Pressure interface</b>					
C1		M20*1.5					
C2		G1/4					
C3		G1/2					
C4		1/4NPT					
CX		Others					
GPT2000/1MPa	A	T2	V3	A2	B4	C4	Complete model specifications

**Notes**

- When the pressure range is -5~5kPa , the pressure sensor chooses non-isolated silicon piezoresistive pressure chip, and the product can only measure non-corrosive gases.
- Please order our liquid level products with cable connection or get a quote if your products have the risks of being soaked or submerged.
- Avoid being blocked if the pressure range of your gauge pressure product is below 3Mpa, because they are usually equipped with vent hole or vent cable.
- GPT200 has 4 ways of outlet, with different protection levels, users can choose according to actual needs.